

Annex 3



# THE GUILDHALL COMPLEX, YORK

City of York Council

Planning & Listed Building Consent

16/01971/FULM & 16/01972/LBC

16 February 2017

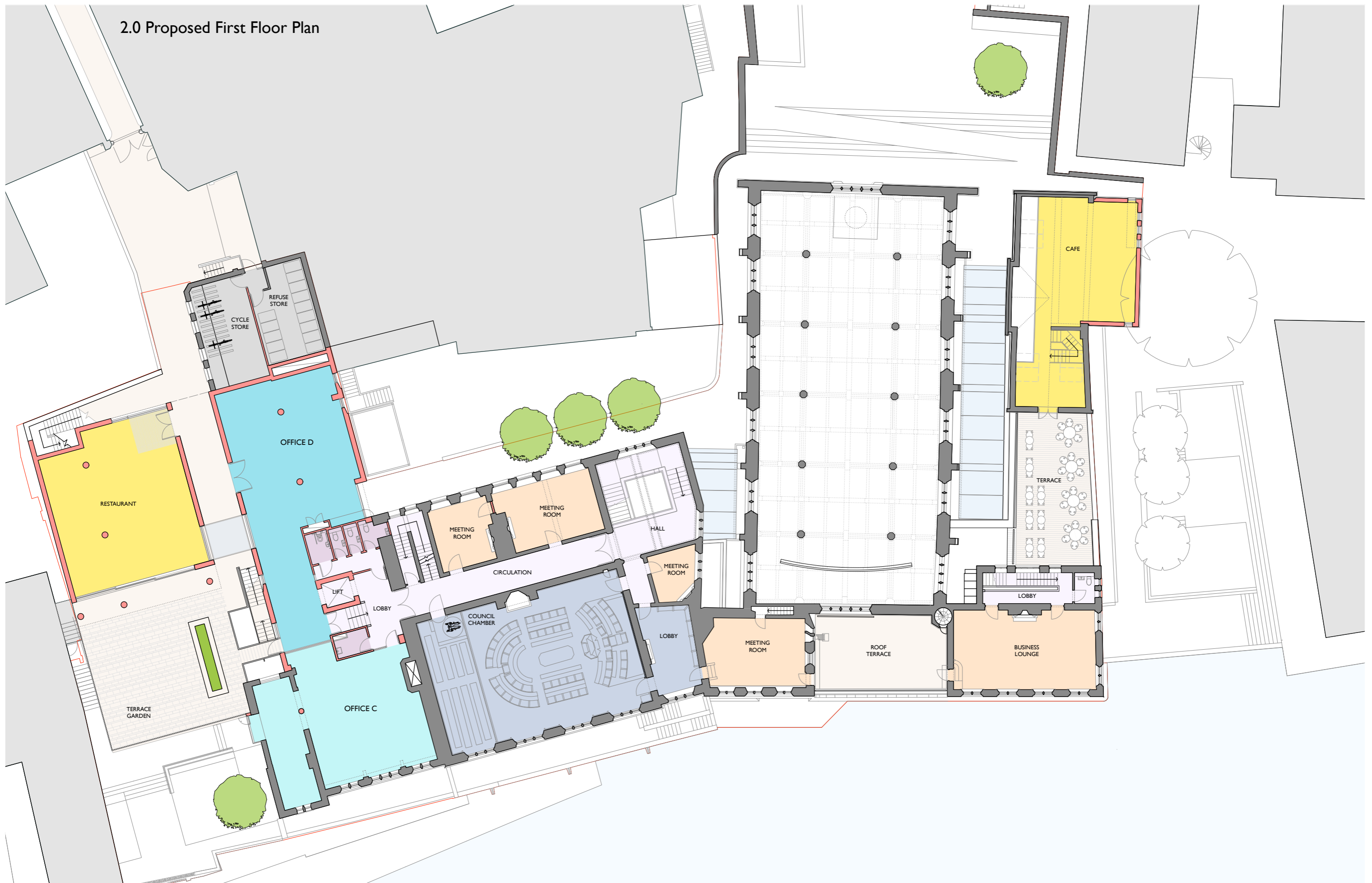
1.0 Proposed Ground Floor Plan



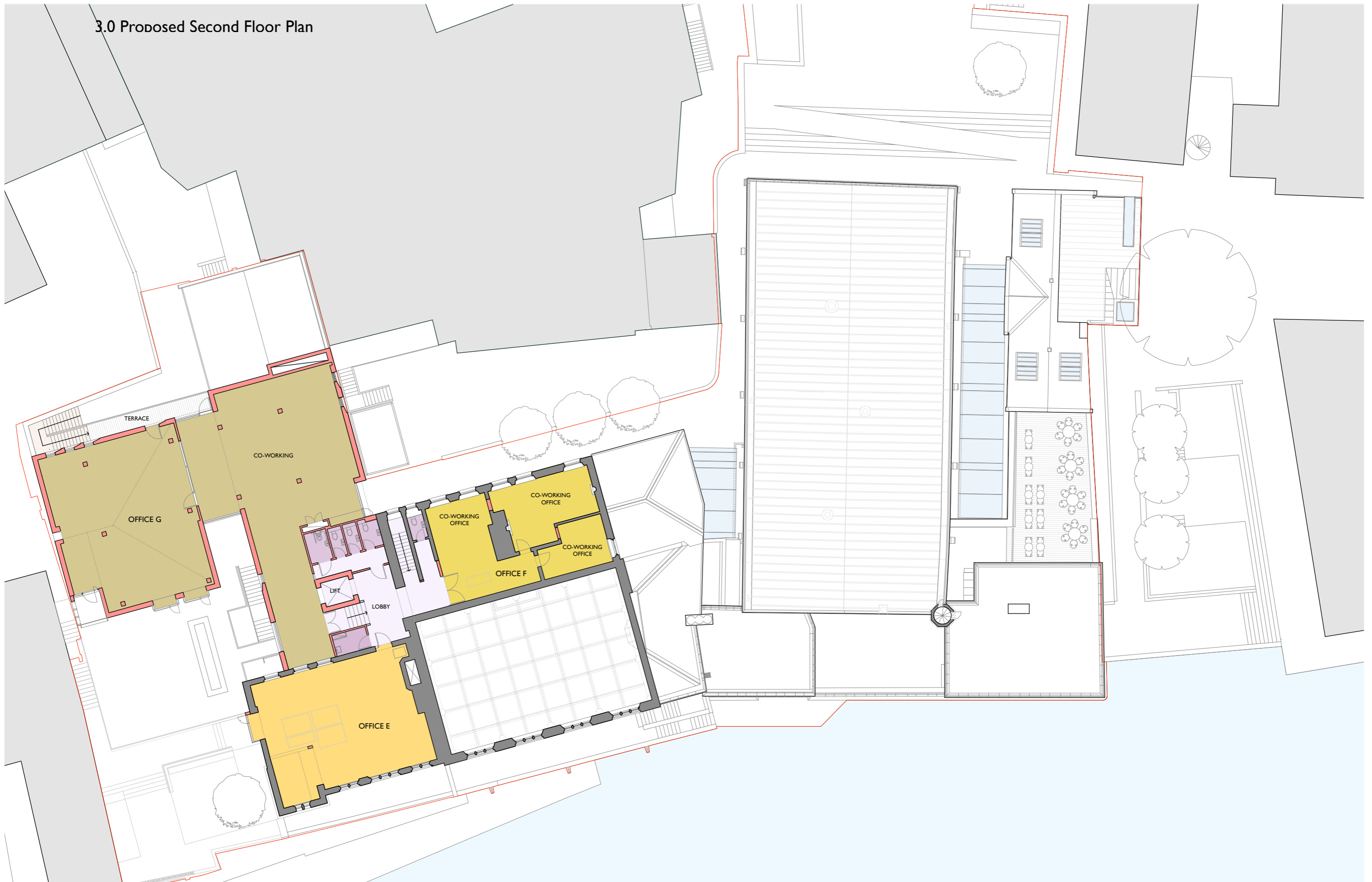
KEY:

<span style="display:inline-block; width:10px; height:10px; background-color:yellow; border:1px solid black;"></span> COMMERCIAL	<span style="display:inline-block; width:10px; height:10px; background-color:lightgrey; border:1px solid black;"></span> PLANT / STORAGE	<span style="display:inline-block; width:10px; height:10px; background-color:orange; border:1px solid black;"></span> OFFICE A : 204.8sqm
<span style="display:inline-block; width:10px; height:10px; background-color:lightorange; border:1px solid black;"></span> OFFICE	<span style="display:inline-block; width:10px; height:10px; background-color:lightpurple; border:1px solid black;"></span> CIRCULATION	<span style="display:inline-block; width:10px; height:10px; background-color:lightred; border:1px solid black;"></span> OFFICE B : 89.1sqm
<span style="display:inline-block; width:10px; height:10px; background-color:orange; border:1px solid black;"></span> COMMITTEE ROOM	<span style="display:inline-block; width:10px; height:10px; background-color:lightgrey; border:1px solid black;"></span> ANCILLARY	
<span style="display:inline-block; width:10px; height:10px; background-color:blue; border:1px solid black;"></span> GUILDHALL	<span style="display:inline-block; width:10px; height:10px; background-color:lightgrey; border:1px solid black;"></span> PUBLIC REALM	

2.0 Proposed First Floor Plan



3.0 Proposed Second Floor Plan



4.0 Council Chamber Use & Circulation



Diagram to show circulation and access for Council Chamber use at proposed ground floor.

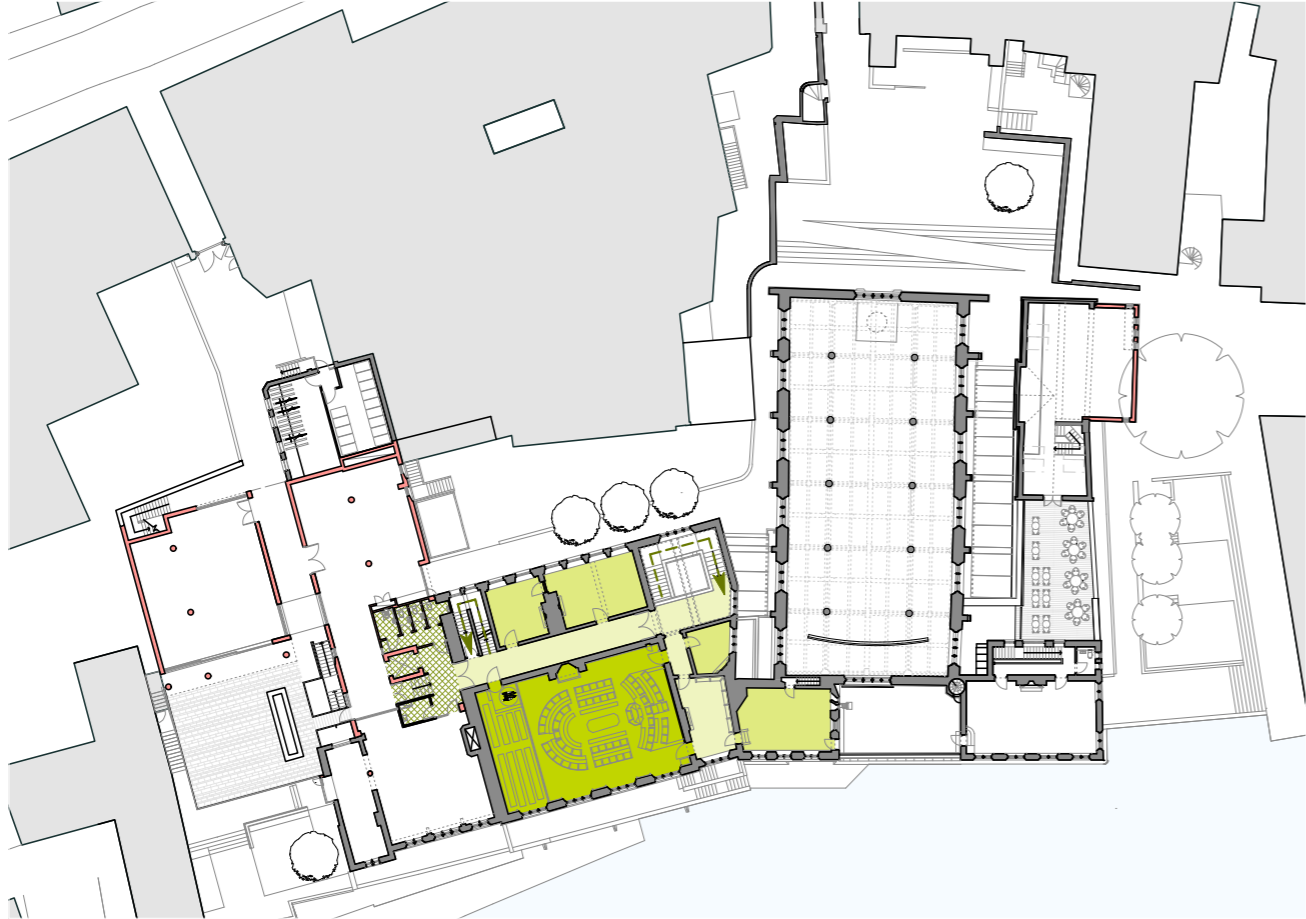


Diagram to show circulation and access for Council Chamber use at proposed first floor.

## 5.0 Guildhall Use: Civic / Ceremonial & Circulation

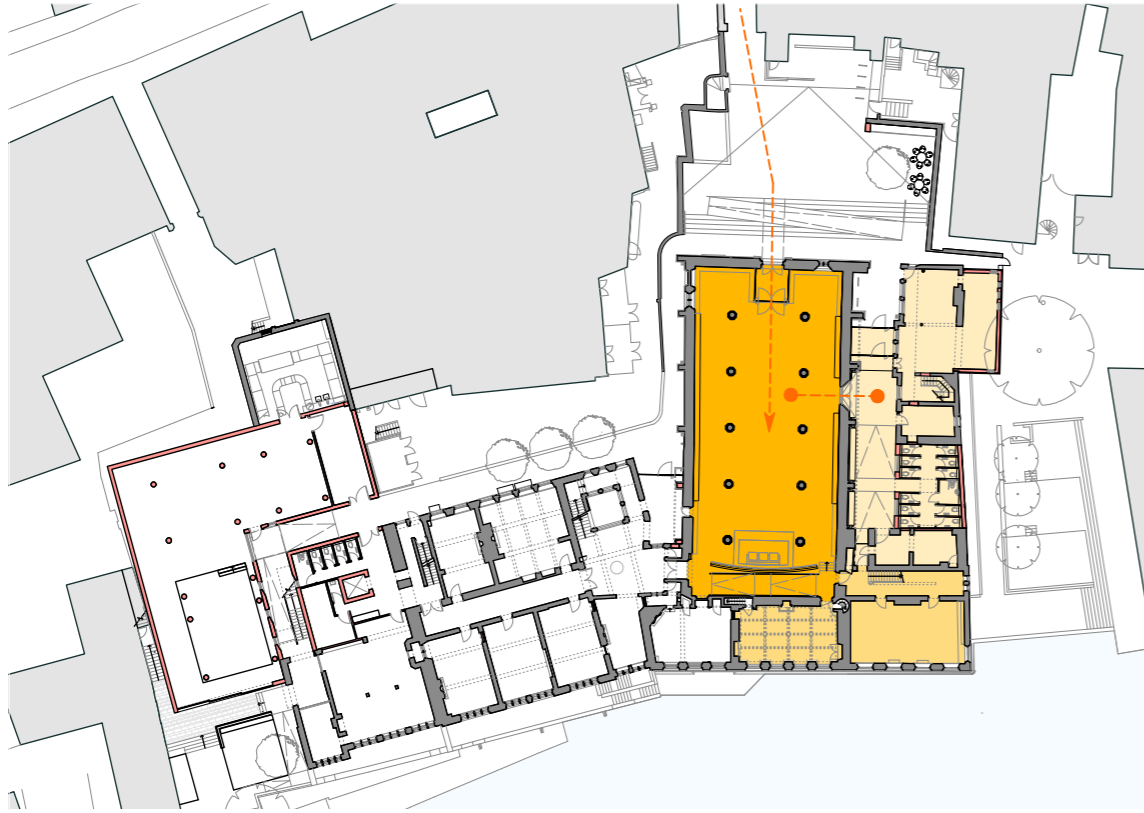


Diagram to show circulation and access for The Guildhall during Civic and Ceremonial events. Access is through Common Hall Yard and the main door to The Guildhall. Interconnectivity is provided to the South Range ancillary accommodation of café space, WC's and furniture store through the proposed new opening. During such events the meeting room and Business Club shall be closed to the public and office users for additional supportive break-out space such as robing etc.

## 6.0 Office Tenant Use & Circulation



Diagram to show circulation and access for the office tenants, and Business Club at ground floor. Access is through the glazed South Range Slype space past the ancillary accommodation of café space, WC's and furniture store. Interconnectivity to the offices is provided behind the Guildhall screen via the proposed ramp.

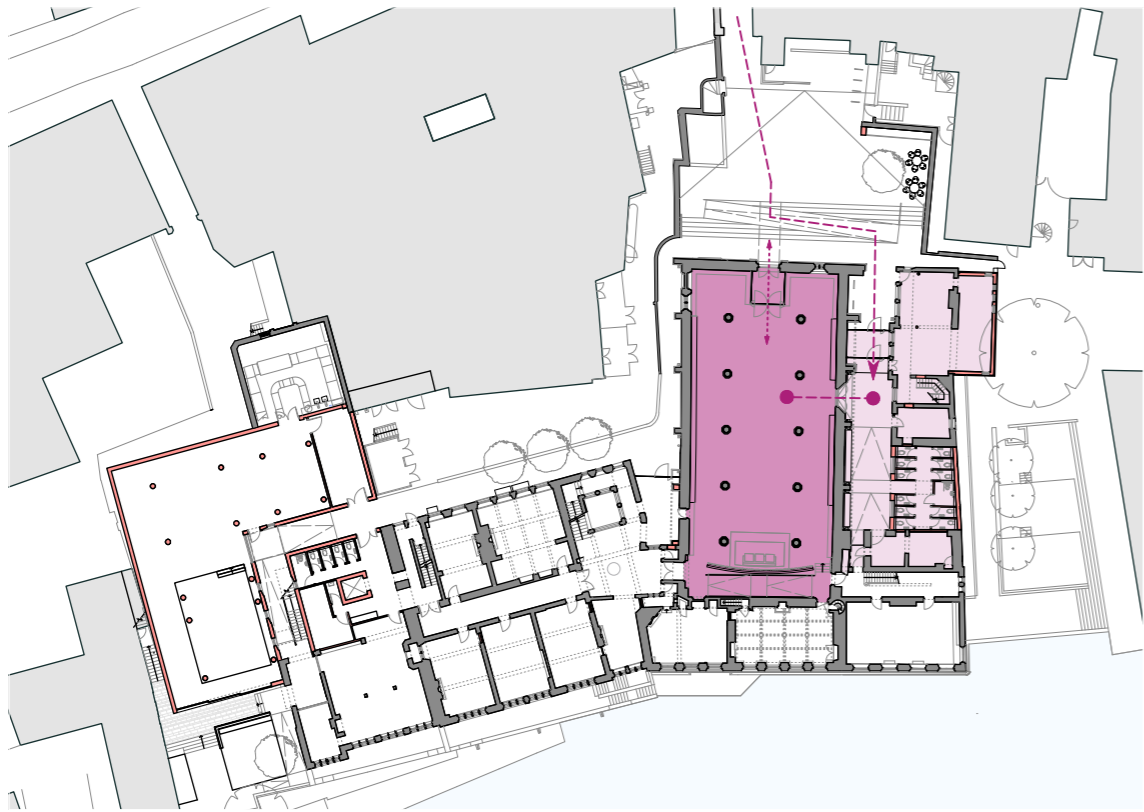


Diagram to show circulation and access for The Guildhall during public events such as concerts or exhibitions. Access is through the glazed South Range Slype space, with an additional entrance through the main Guildhall door if required. Interconnectivity is provided to the South Range ancillary accommodation of café space, WC's and furniture store through the proposed new opening.

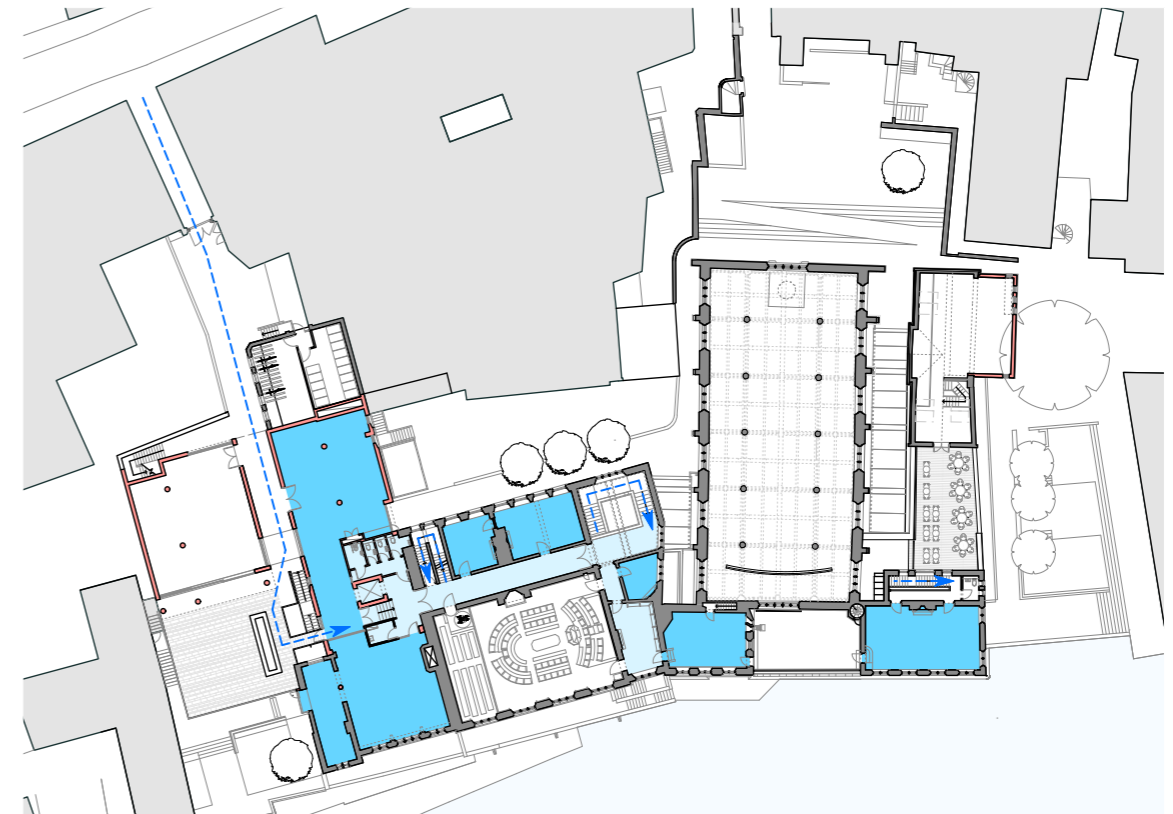


Diagram to show circulation and access for the office tenants, and Business Club at ground floor. Access is through the glazed South Range Slype space past the ancillary accommodation of café space, WC's and furniture store. Interconnectivity to the offices is provided behind the Guildhall screen via the proposed ramp.